



MONTHLY MEMBERSHIP PROGRESS REPORT

District 14 F

Results as of: 05/31/2018

GMT: CINDY GREGG

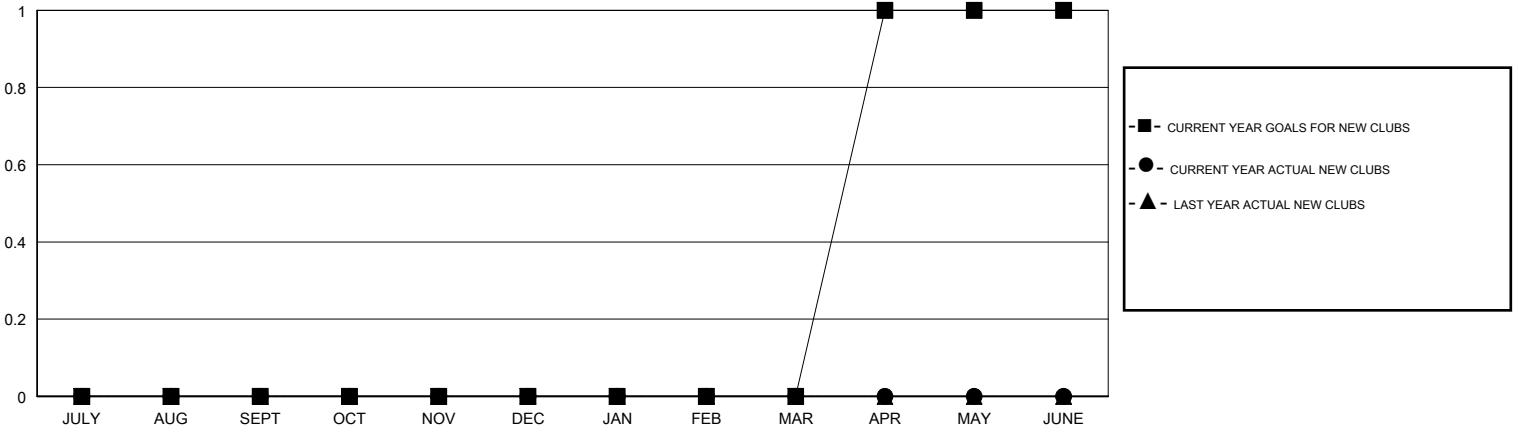
LOCATION PENNSYLVANIA

GMT CA

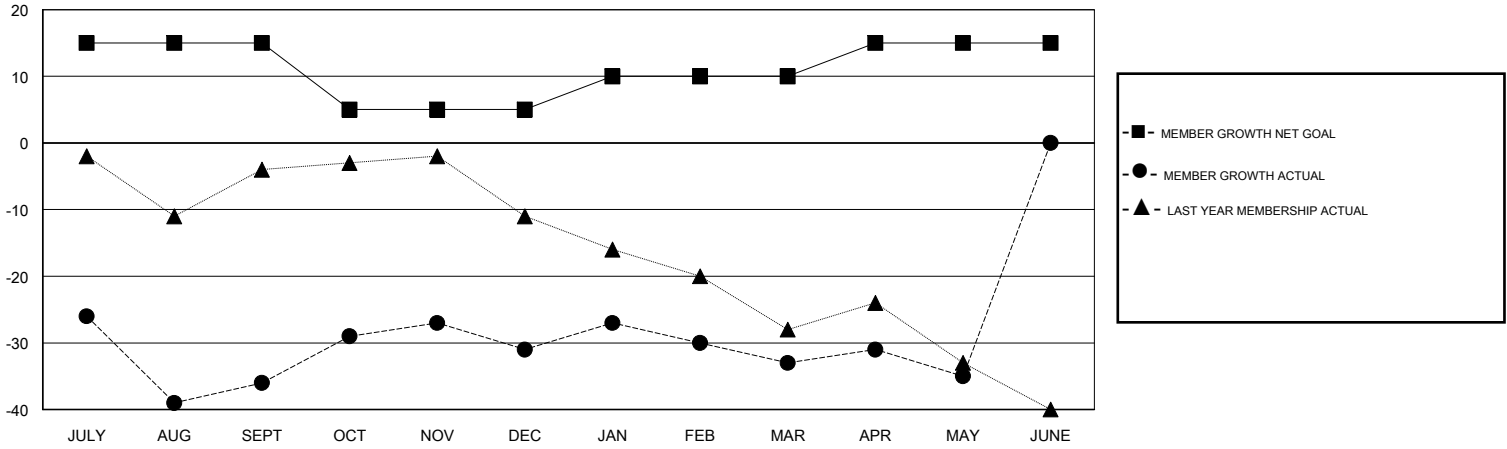
Clubs			
RESULTS FOR 2017-2018			
QUARTER	NEW CLUB GOAL	NEW CLUBS	DROPPED CLUBS
JULY/AUG/SEPT	0	0	1
OCT/NOV/DEC	0	0	0
JAN/FEB/MAR	0	0	0
APR/MAY/JUNE	1	0	0

Members			
RESULTS FOR 2017-2018			
QUARTER	MEMBER GROWTH NET GOAL	MEMBER GROWTH ACTUAL	DROPPED MEMBERS ACTUAL (including transfers)
JULY/AUG/SEPT	15	21	45
OCT/NOV/DEC	-10	31	25
JAN/FEB/MAR	5	22	22
APR/MAY/JUNE	5	16	15

GOALS AND ACTUAL NEW CLUBS CUMULATIVE



GOALS AND ACTUAL MEMBERS CUMULATIVE



DROPPED CLUBS: 1	23 CLUBS OF 41 ADDED 1 OR MORE NEW MEMBERS	<u>GENDER DISTRIBUTION</u>	
		MALE	878 (78.11%)
		FEMALE	246 (21.89%)
		Women Percentage Fiscal Year Goal: 21%	
<u>DROPPED MEMBERS</u>		TOTAL FAMILY UNIT MEMBERS	191
DECEASED	14	FAMILY MEMBERS PAYING HALF DUES	99
CLUB CANCELLED	0		
OTHER	93		
TOTAL	107		

[CLICK HERE FOR CUMULATIVE MEMBERSHIP DATA](#)